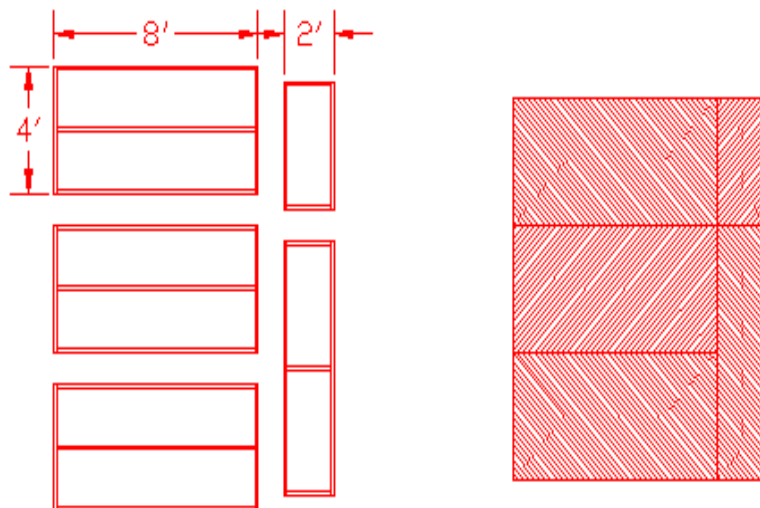
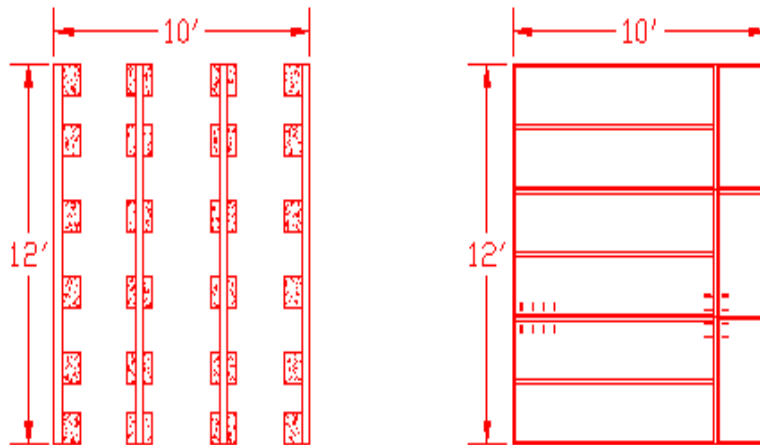


## Caribou instructions

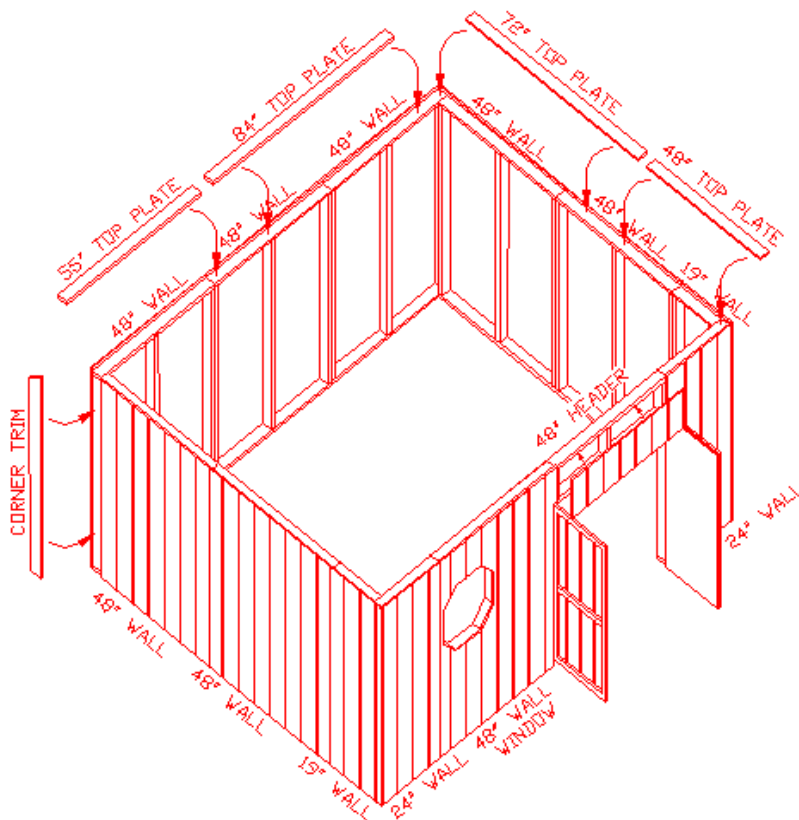
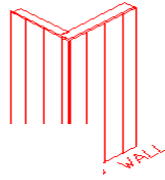
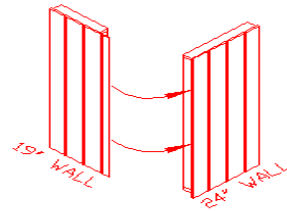
1. Using your material list , check to insure all your materials are accounted for. At the same time get to know the names and pictures of all your parts.
2. Start by making sure the area where you will be placing the floor is level. In many cases the use of 20 patio blocks and 4 - 12' treated 4 x 4 posts will work as a base. Assemble the floor as shown in the diagram. Place the sections together and nail with 3" nails. Place the floor sheeting onto the floor framing matching the plywood to the section and nail with 2" nails



**Customer Service Hotline 1-800-465-2918**

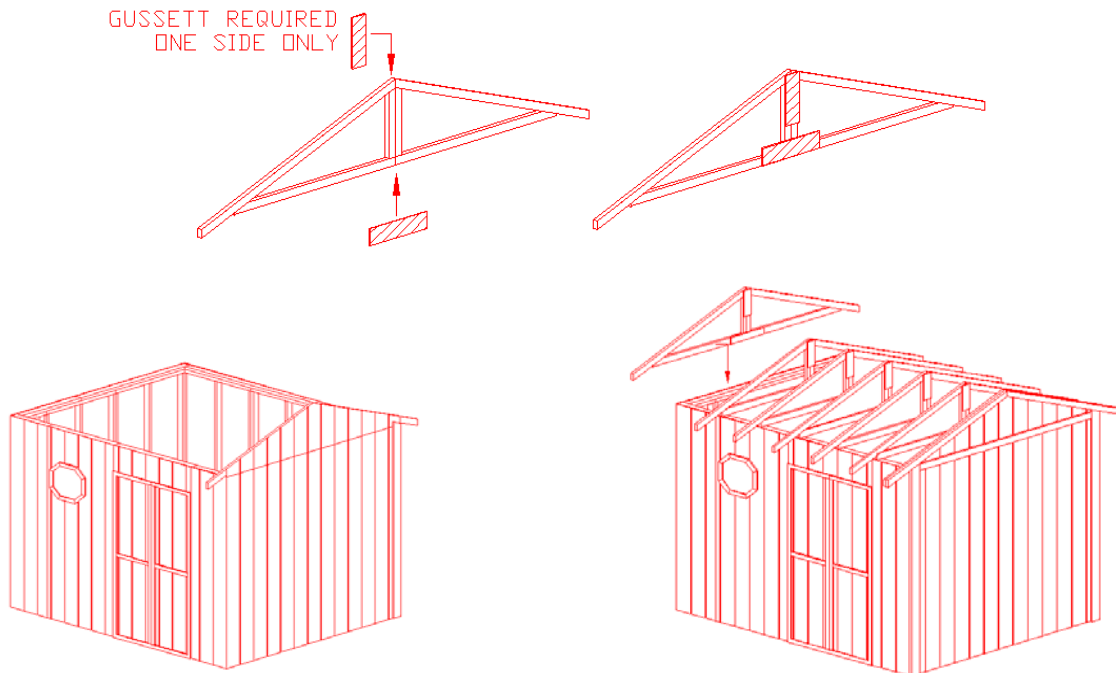
**NORFAB Caribou Shed**

- Stand up your walls as illustrated starting at the left front with a 24" panel and then the left side 19" panel. The 3 1/2" overhang on the panel goes to the bottom. Notice the paneling is designed to overlap the side of the floor and the bottom sill plate is to rest on the top of the floor. Attach these together with the 3" nails. Next stand the 48" wall panel up and attach to 19" and so on as illustrated. The door or window may be installed at either side along the front. Once the door is installed place the Door header into place and attach the 9" paneling. Place the wall headers as shown and nail with 3" nails. Finally attach the walls to the floor with 3" nails.

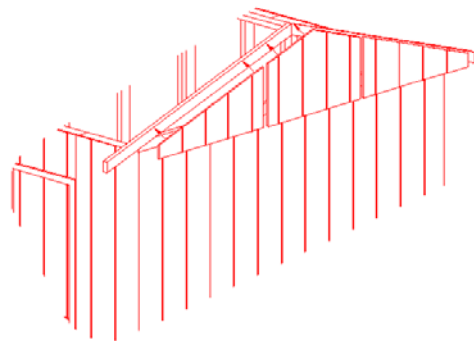


**Customer Service Hotline 1-800-465-2918**  
**NORFAB Caribou Shed**

4. The mono trusses are joined together with metal truss plate. On a level surface unfold the truss until flat. Nail the gussets to the opposite side of the steel plate as shown( use at least 20 nails per gusset). Starting at the side walls, stand the end trusses up keeping them center on the front and rear wall. Keeping the rest of the trusses 24" on center apart, stand them into place on top of the walls. Make sure they overhang the side walls equally on both sides. Nail them to the top plates with 3" nails

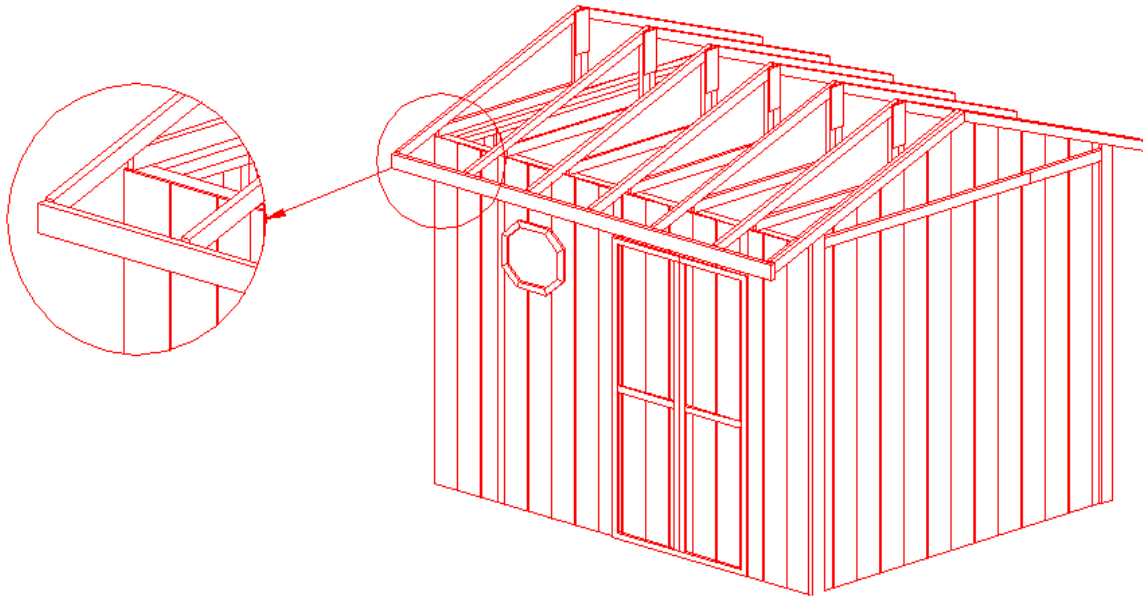


5. Nail the end paneling into place once trusses are in place. Be sure to keep the grooves lined up with wall paneling

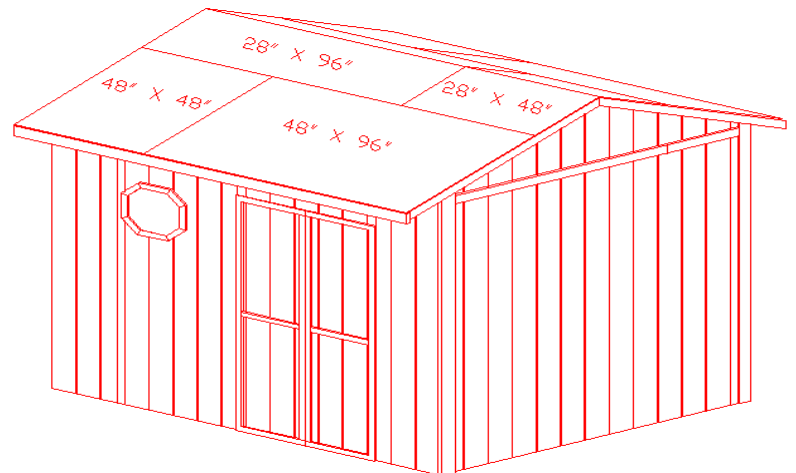


**Customer Service Hotline 1-800-465-2918**  
**NORFAB Caribou Shed**

6. Attach the front, side, gable truss, and corner fascia as shown. Notice: attach the angle cut corner piece to the side and the square cut piece to the front or rear. The side fascia attached to the truss must be down 1/4" from the top as shown..

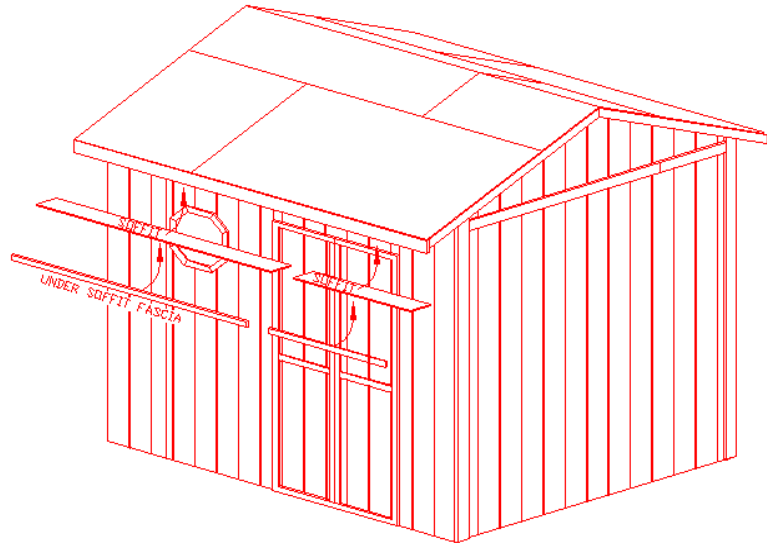


7. Sheet the roof as shown. Keep the outside edges flush with the outside of all fascias.



**Customer Service Hotline 1-800-465-2918**  
**NORFAB Caribou Shed**

8. Install the soffit under eaves and attach to the bottom side of the truss. Nail the under soffit fascia to the wall tight to the soffit



9. Shingle with your choice of shingles using the shingle manufacturers instructions.
10. Install planter box centered under window
11. Place the window pain over the octagon opening at the top of the wall and flat against the inside of the wall panel. Install 2 - 1" x 2" x 52" strips with notched end to the inside frame of the window section. Make sure the notch is at the bottom and is against the wall panel. The strips should be resting loosely on the glass and tight to the top of the wall . Carefully nail them in with finishing nails. The window should slide up and down freely. Using the 3/4" screws attach the window jam lever to either side of the strips flush with the bottom of the octagon opening. This should be situated in such a manner as to lock the window in the up position. Now install the window handle. Remove the paper backing from the foam rubber and stick it to the bottom side of the glass in the center. Slide the black handle over the foam.

**Enjoy your new Caribou Shed!!**

**Customer Service Hotline 1-800-465-2918  
NORFAB Caribou Shed**